



## WARN Industrial Winch

**Model**

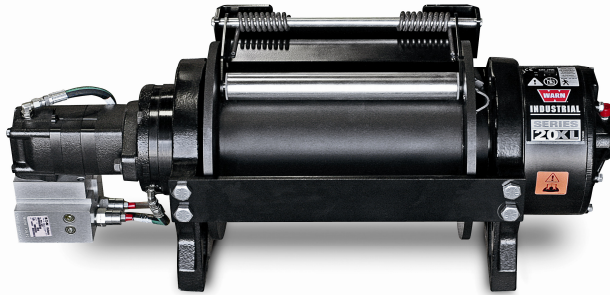
**Part Number**

**Motor Type**

**Series 20XL-LP  
Hydraulic Winch  
Air Clutch**

**79210**

Hydraulic  
11.9 ci



The Warn Series XL product line combines durable cast iron construction, high efficiency hydraulic motor, and a robust 2X rated load braking system with a permanently lubricated and hardened 2-stage planetary gear train for superior intermittent-duty performance for loads up to 30,000 lbs. Winches are also available with manual or air clutches and 2 drum widths. A roller tension plate is standard along with bi-directional operation and a variety of mounting options to fit a variety of applications.

Warn Series XL winches are not suitable for hoisting applications or movement of persons.

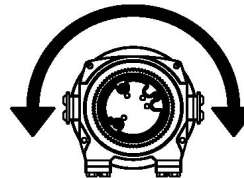
### Accessories

Description:	Part Number
Fairlead SRS-XL-LONG	77869
Wire Rope Assembly 9/16"x245' EIPS	77452
Snatch Block XL-60K LB	80858

### Engineering Data

Rated Pulling Force:	20000 lbf	9072 kgf
Drum Barrel Diameter:	5.75 in	146 mm
Drum Flange Diameter:	12.25 in	311 mm
Distance Between Flanges:	14 in	356 mm
Recommended Maximum Wire Rope Diameter:	9/16 in	14.3 mm
Recommended Minimum Wire Rope Breaking Strength:	33600 lbf	15241 kgf
Approximate Shipping Weight:	250.0 lb	113.4 kg
Duty Cycle (intermittent per SAE J706 section 6.2):	2760 ft	84.1 m
Mounting Bolt Torque:	159 ft*lb	216 N*m
Maximum Layers of Wire Rope:	4	
Gear Reduction:	28.5:1	
Brake Type:	Spring Applied Disk	
Contactor / Remote Type:	N/A	

### Drum Rotation



Viewed from Motor End

### Standards Compliance

- SAE J706
- CE Machinery Directive 98/37/EC and 2006/42/EC

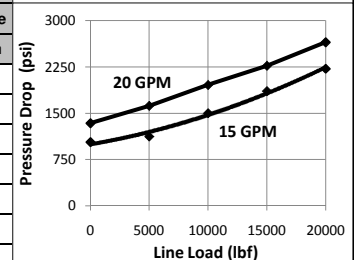
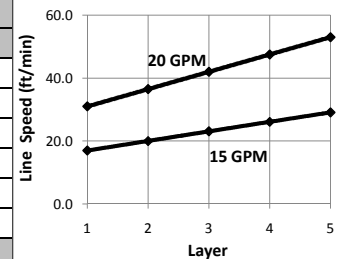
### Performance By Layer- 9/16" (14.3 mm) dia. rope

Drum Layer	Line Load *			Line Speed 15 GPM		Line Speed 20 GPM		Drum Capacity	
	lbf	kgf	kN	ft/min	m/min	ft/min	m/min	ft	m
1	20000	9072	89.0	17.0	5.2	31.0	9.4	36	11.0
2	16975	7700	75.5	20.0	6.1	36.5	11.1	79	24.1
3	14745	6688	65.6	23.1	7.0	42.0	12.8	129	39.3
4	13032	5911	58.0	26.1	8.0	47.5	14.5	185	56.4
5	11676	5296	51.9	29.1	8.9	53.0	16.2	248	75.6

\* Never exceed the Rated Pulling Force. Installation of a Rated Capacity Limiter is recommended.

### First Layer Performance

Line Load		Pressure Drop at 15 GPM		Pressure Drop at 20 GPM		Duty Cycle
lbf	kgf	psi	BAR	psi	BAR	min/10min
0	0	1030	71.0	1340	92.4	N/A
5000	2268	1120	77.2	1620	111.7	N/A
10000	4536	1500	103.4	1960	135.1	N/A
15000	6804	1860	128.2	2270	156.5	N/A
20000	9072	2220	153.1	2650	182.7	N/A



**WARN INDUSTRIES, INC**  
Industrial Products

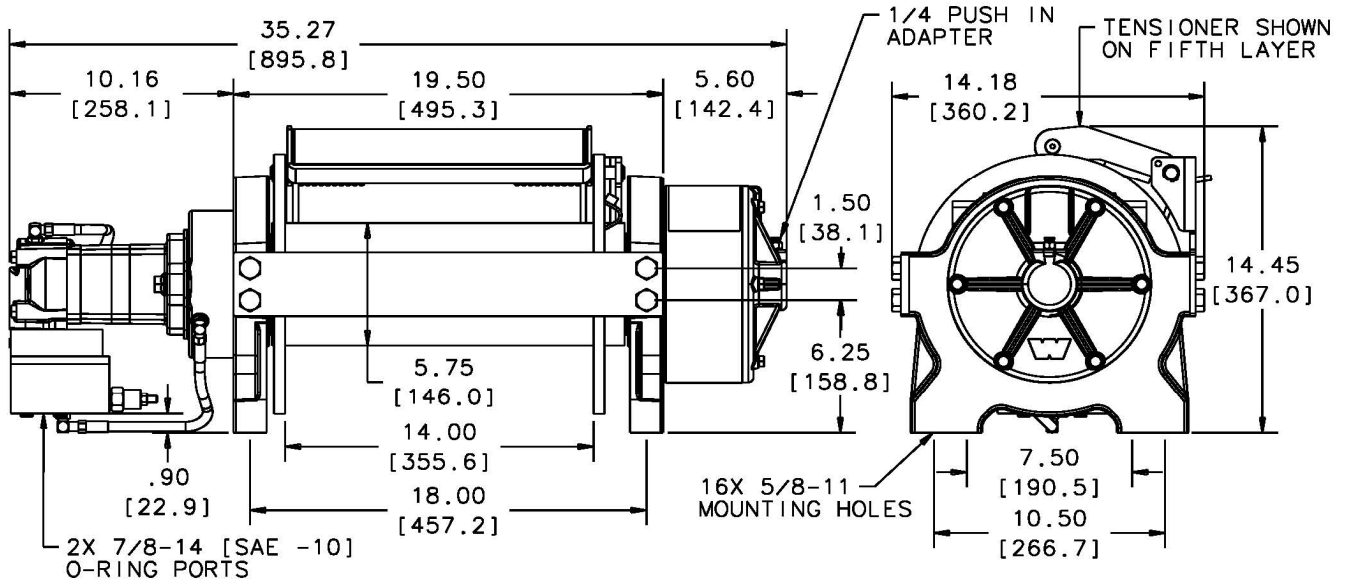
Customer Service (North America): 1.800.543.9276  
Customer Service (International): 1.503.722.3008  
FAX: 1.503.722.3000 www.warn.com

12900 S.E. Capps Road,  
Clackamas, OR USA 97015



# WARN Industrial Winch

Model	Part Number	Motor Type
Series 20XL-LP Hydraulic Winch Air Clutch	79210	Hydraulic 11.9 ci



Motor / Contactor may be rotated in 90 degree increments. Clutch housing may be rotated in 60 degree increments.

Units are given in inches [millimeters], unless otherwise specified

Recommended Mounting- Always Observe Correct Drum Rotation			Hydraulic System Specifications		
Pull from bottom of winch	Pull from bottom of winch	Pull from top of winch	Maximum System Pressure:	3000 psi	207 BAR
			Maximum Motor Pressure Drop:	3000 psi	207 BAR
Feet down	Feet forward	Feet forward	Maximum Rated Input Flow:	20 GPM	76 LPM
Pull from top of winch	Pull from top of winch	Pull from top of winch	Control Valve Type:	3-position, 4-way, open center, spring return (motor spool)	
			<b>Control Valve Schematic</b>		
Feet down without angle brace	Feet down with angle brace	Angle Braces Only			
Notes:					

**WARN INDUSTRIES, INC**  
Industrial Products

Customer Service (North America): 1.800.543.9276  
Customer Service (International): 1.503.722.3008  
FAX: 1.503.722.3000 www.warn.com

12900 S.E. Capps Road,  
Clackamas, OR USA 97015