



## WARN Industrial Winch

### Model

**Series 18-A-73  
Hydraulic Winch  
Manual Clutch**

### Part Number

**74125**

### Motor Type

Hydraulic  
7.3 ci  
(120 cc)

The Series 18 hydraulic winch features a 2 stage planetary gear train with a total reduction of 36:1. This winch uses a heavy duty automatic disc brake and a locking clutch lever. The 4" (102mm) steel drum provides excellent durability for the wire rope. Designed to meet SAE J706 and CE standards.



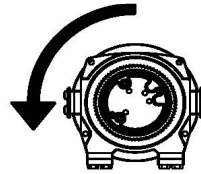
### Accessories

Description:	Part Number
Wire Rope Tension Plate 10"	31149
Fairlead 10"	73196
Remote Clutch Air	71370
Remote Clutch Mechanical	38316
Wire Rope Assembly 1/2"x75'	77534

### Engineering Data

Rated Pulling Force:	18000 lbf	8165 kgf
Drum Barrel Diameter:	4.00 in	102 mm
Drum Flange Diameter:	8.24 in	209 mm
Distance Between Flanges:	9.95 in	253 mm
Recommended Maximum Wire Rope Diameter:	1/2 in	12.7 mm
Recommended Minimum Wire Rope Breaking Strength:	26600 lbf	12066 kgf
Approximate Shipping Weight:	82.0 lb	37.2 kg
Duty Cycle (intermittent per SAE J706 section 6.2):	565 ft	172 m
Mounting Bolt Torque:	35 - 40 ft*lb	47 - 54 N*m
Maximum Layers of Wire Rope:	3 (with 1/2" dia. rope)	
Gear Reduction:	36:1	
Brake Type:	Disk	
Contactor / Remote Type:	N/A	

### Drum Rotation



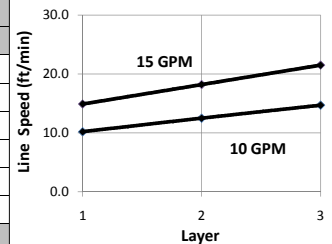
Viewed from Motor End

### Standards Compliance

- 1.-SAE J706
- 2.-CE Machinery Directive 98/37/EC and 2006/42/EC

### Performance By Layer- 1/2" (12.7 mm) dia. rope

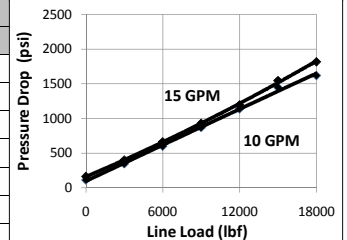
Drum Layer	Line Load *			Line Speed 10 GPM		Line Speed 15 GPM		Drum Capacity	
	lbf	kgf	kN	ft/min	m/min	ft/min	m/min	ft	m
1	18000	8165	80.1	10.2	3.1	14.9	4.5	21	6.4
2	14727	6680	65.5	12.5	3.8	18.2	5.5	46	14.0
3	12461	5652	55.4	14.7	4.5	21.5	6.6	75	22.9



\* Never exceed the Rated Pulling Force. Installation of a Rated Capacity Limiter is recommended.

### First Layer Performance

Line Load		Pressure Drop at 10 GPM		Pressure Drop at 15 GPM		Duty Cycle
lbf	kgf	psi	BAR	psi	BAR	min/10min
0	0	113	7.8	162	11.2	N/A
3000	1361	345	23.8	400	27.6	N/A
6000	2722	599	41.3	663	45.7	N/A
9000	4082	867	59.8	930	64.1	N/A
12000	5443	1137	78.4	1196	82.5	N/A
15000	6804	1446	99.7	1546	106.6	N/A
18000	8165	1617	111.5	1816	125.2	N/A



**WARN INDUSTRIES, INC**  
Industrial Products

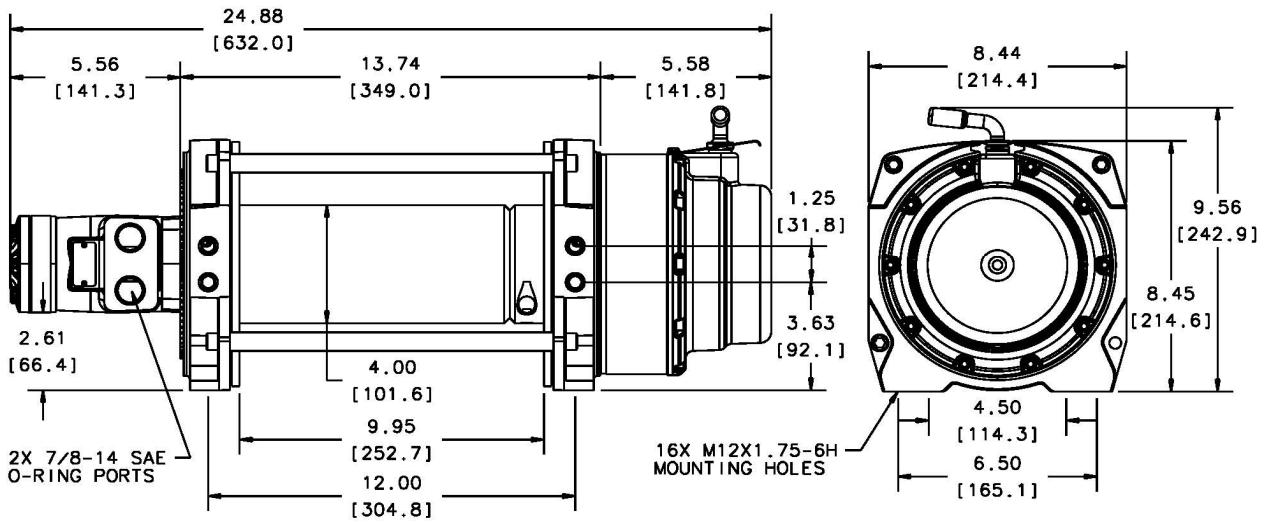
Customer Service (North America): 1.800.543.9276  
Customer Service (International): 1.503.722.3008  
FAX: 1.503.722.3000 www.warn.com

12900 S.E. Capps Road,  
Clackamas, OR USA 97015



# WARN Industrial Winch

Model	Part Number	Motor Type
Series 18-A-73 Hydraulic Winch Manual Clutch	74125	Hydraulic 7.3 ci (120 cc)



Motor / Contactor may be rotated in 90 degree increments. Clutch housing may be rotated in 72 degree increments.

Units are given in inches [millimeters], unless otherwise specified

### Recommended Mounting- Always Observe Correct Drum Rotation

### Hydraulic System Specifications

Pull from bottom of winch



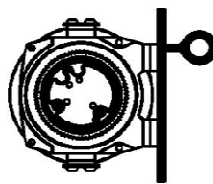
Feet down

Pull from bottom of winch



Feet forward

Pull from top of winch



Feet forward

Pull from top of winch



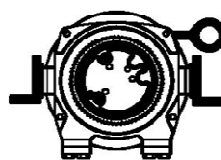
Feet down without angle brace

Pull from top of winch



Feet down with angle brace

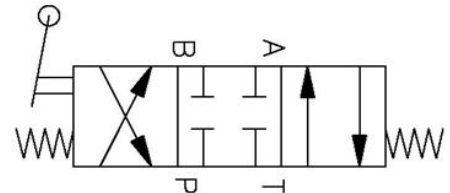
Pull from top of winch



Angle Braces Only

Maximum System Pressure:	2400 psi	166 BAR
Maximum Motor Pressure Drop:	1816 psi	125 BAR
Maximum Rated Input Flow:	15 GPM	57 LPM
Control Valve Type:	3-position, 4-way, closed center, spring return (cylinder spool)	

### Control Valve Schematic



Notes:

**WARN INDUSTRIES, INC**  
Industrial Products

Customer Service (North America): 1.800.543.9276  
Customer Service (International): 1.503.722.3008  
FAX: 1.503.722.3000 www.warn.com

12900 S.E. Capps Road,  
Clackamas, OR USA 97015